

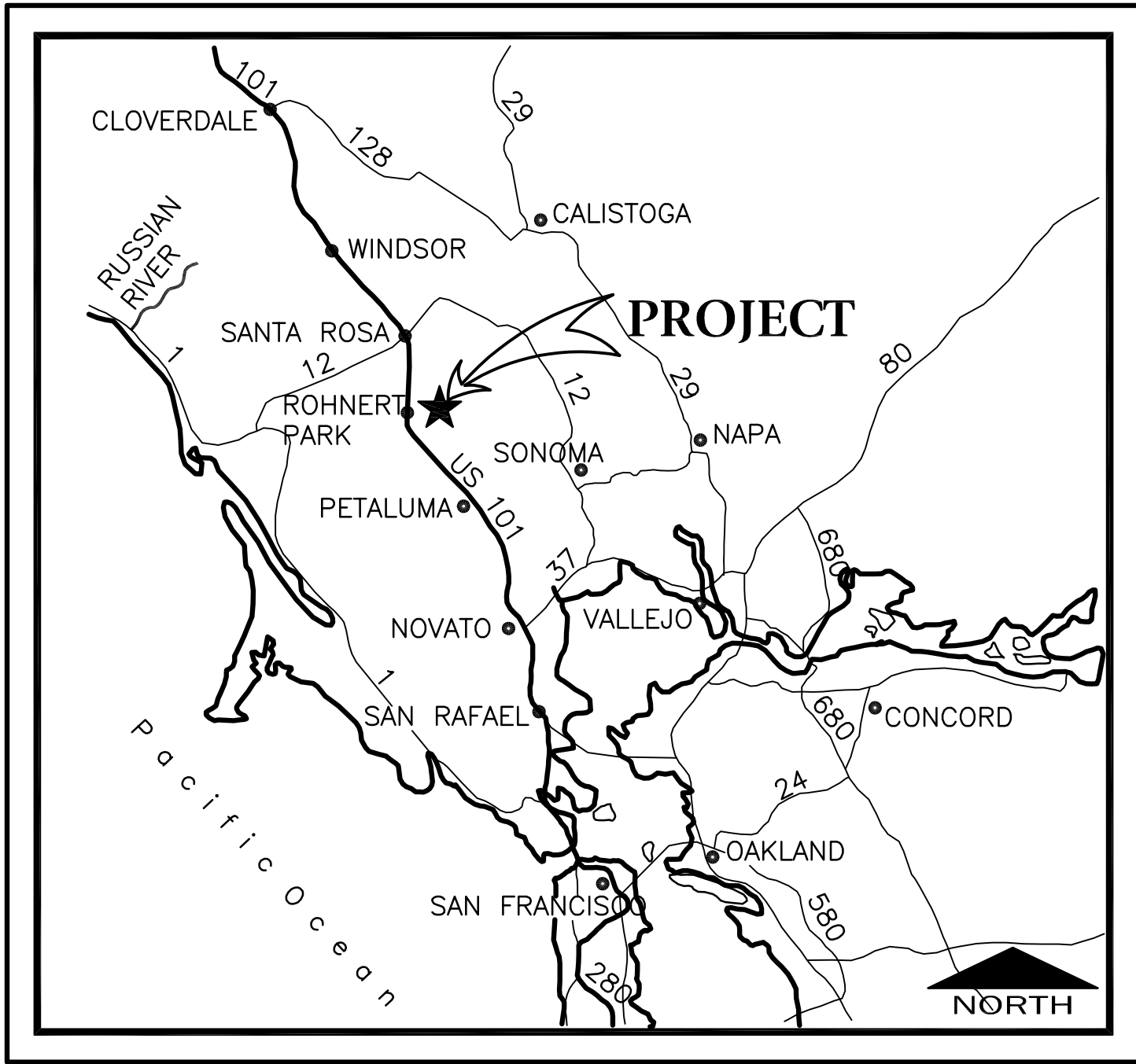
IMPROVEMENT PLANS

LAUREL DRIVE & PETALUMA HILL ROAD SIDEWALK & SIGNAL IMPROVEMENTS

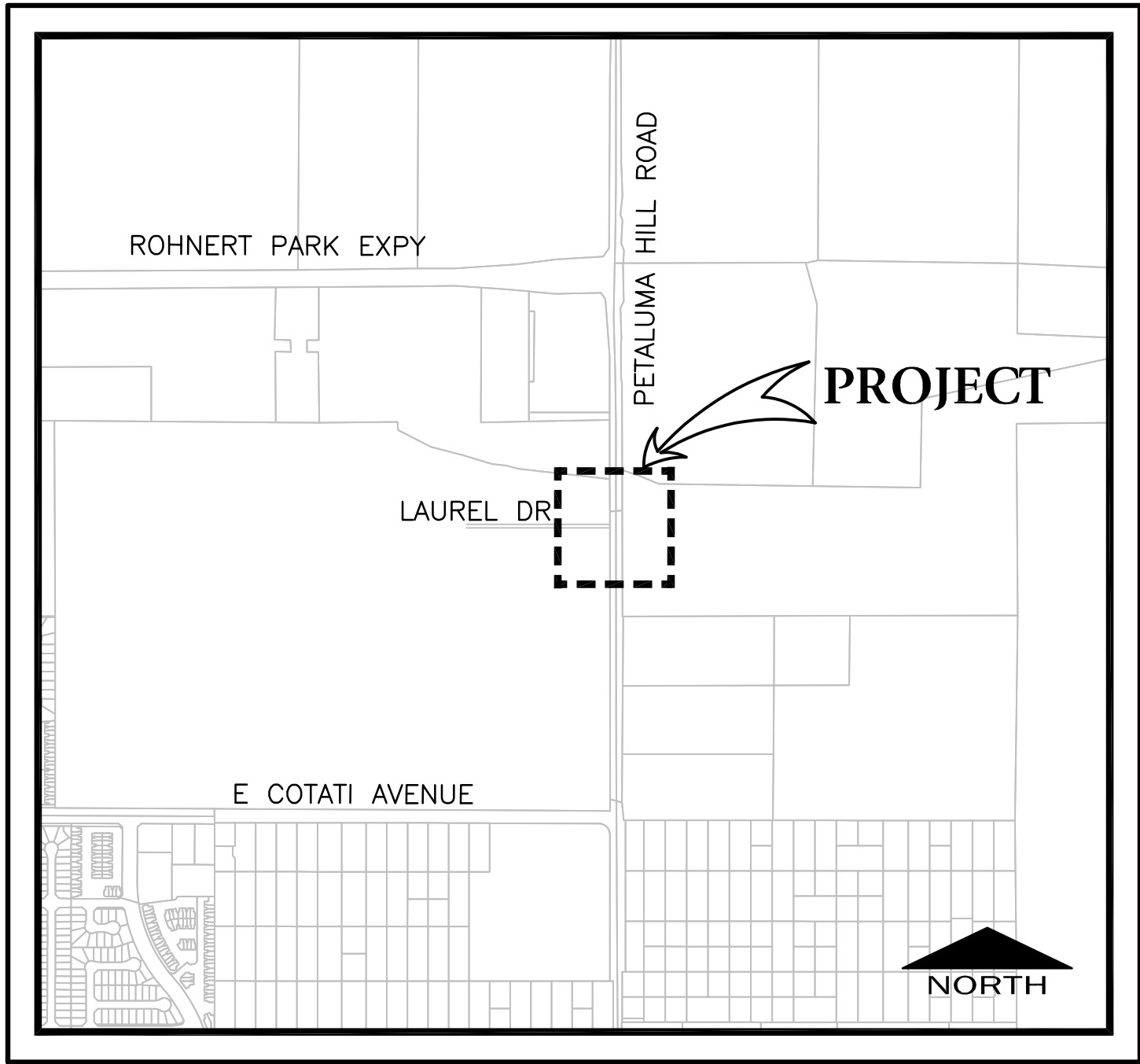
CITY OF ROHNERT PARK
2007-19
SONOMA COUNTY - CALIFORNIA
APRIL 2022



CALIFORNIA STATE MAP
NOT TO SCALE



VICINITY MAP
NOT TO SCALE



LOCATION MAP
NOT TO SCALE

INDEX OF SHEETS	
SHEET NO.	DESCRIPTION
1	COVER
2	ABBREVIATIONS LEGEND & NOTES
3	EC NOTES & DETAILS
4	ADA PLAN
5	DETAILS
6	TRAFFIC SIGNAL & STRIPING PLAN

CITY COUNCIL

MAYOR: JACKIE ELWARD
VICE MAYOR: WILLY LINARES
COUNCIL MEMBER: PAM STAFFORD
COUNCIL MEMBER: SUSAN H. ADAMS
COUNCIL MEMBER: GERARD GIUDICE

CITY MANAGER: DARRIN JENKINS
CITY ENGINEER: VANESSA GARRETT

APPROVED FOR CONSTRUCTION

Vanessa Marin Garrett 7/26/2023
DATE

VANESSA MARIN GARRETT, R.C.E. 84141
CITY ENGINEER, CITY OF ROHNERT PARK
LICENSE EXPIRES SEPTEMBER 30, 2023

Brelje & Race
CONSULTING ENGINEERS
475 Aviation Blvd. • Suite 120 • Santa Rosa, CA 95403 • 707-576-1322
www.brelje.com

M. Sean Jeane 04-06-22
DATE

M. SEAN JEANE

04-06-22 krlizghi \\4442\dwg\4442_00\4442.00 PH3 - NOTE.dwg TAB: 2--NOTES

ABBREVIATIONS

AB	AGGREGATE BASE	MIN	MINIMUM
AC	ASPHALT CONCRETE	MISC	MISCELLANEOUS
ACP	ASBESTOS CEMENT PIPE	MJ	MECHANICAL JOINT
AD	ALGEBRAIC DIFFERENCE	MSL	MEAN SEA LEVEL
ADA	AMERICANS WITH DISABILITIES ACT	N	NORTH
ADPT	ADAPTER	NO.	NUMBER
AGG	AGGREGATE	NA	NOT APPLICABLE
ALUM	ALUMINUM	NY	NOT IN CONTRACT
AP	ANGLE POINT	NPT	NATIONAL PIPE THREAD
APN	ASSESSORS PARCEL NUMBER	OC	ON CENTER
APPROX	APPROXIMATE	OD	OUTSIDE DIAMETER
ARV	AIR RELEASE VALVE	OH	OVERHEAD
AVE	AVENUE	OZ	OUNCE
BC	BEGIN HORIZONTAL CURVE	PA	PLANTER AREA
BLDG	BUILDING	PC	POINT OF CURVATURE
BLVD	BULEVARD	PCC	POINT OF COMPOUND CURVATURE
BM	BENCHMARK	PCC	PORTLAND CEMENT CONCRETE
BO	BLOWOFF	PD	PLANTER DRAIN
BV	BUTTERFLY VALVE	PE	PLAIN END
BVC	BEGIN VERTICAL CURVE	PG	PAD GRADE
BSW	BACK OF SIDEWALK	PV	POST INDICATOR VALVE
BT	BOTTOM OF TAPER	R	PROPERTY LINE
B&R	BRELJE & RACE	PN	PAVING NOTCH
CAV	COMBINATION AIR AND VACUUM RELEASE VALVE	PCC	POINT OF CONNECTION
CB	CATCH BASIN	PCC	POINT ON CURVE
CBC	CALIFORNIA BUILDING CODE	POT	PRIVATE OPEN SPACE
CDF	CONTROLLED DENSITY FILL	PP	POINT ON TANGENT
CHK	CHECK	PRC	POWER POLE
CIPP	CAST-IN-PLACE PIPE	PRV	POINT OF REVERSE CURVATURE
CL	CENTERLINE	PSI	PRESSURE REDUCING VALVE
CL	CENTERLINE	PSV	PRESSURE SUSTAINING VALVE
CL	CLASS	PT	POINT OF TANGENCY
CLR	CLEAR	PUE	PUBLIC UTILITY EASEMENT
CMP	CORRUGATED METAL PIPE	PVC	POLYVINYL CHLORIDE
CMPA	CORRUGATED METAL PIPE ARCH	PVI	POINT OF VERTICAL INTERSECTION
CO	CLEANOUT	PVMT	PAVEMENT
COAX	COAXIAL CABLE	PWE	PUBLIC WATER EASEMENT
CONC	CONCRETE	R	RADIUS
COND	CONDUIT	RAW	RAW WATER
COTG	CLEANOUT TO GRADE	RC	RELATIVE COMPACTION
CP	CONTROL POINT	RCB	REINFORCED CONCRETE BOX
CPLG	COUPLING	ROP	REINFORCED CONCRETE PIPE
CR	CURB RETURN	ROAD	ROAD
CSP	CORRUGATED STEEL PIPE	RD	ROOF DRAIN
CY	CENTER	RED	REDUCER
CY	CUBIC YARDS	REF	REFERENCE
C/C	CENTER TO CENTER	RFP	REDUCED PRESSURE
C&G	CURB AND GUTTER	RSC	BACKFLOW PREVENTER
DBL	DOUBLE	RT	REMOTE SUPERVISORY CONTROL
DDC	DOUBLE CHECK DETECTOR CHECK	RT	RIGHT
DDC	DOUBLE DETECTOR CHECK	RT	RING TIGHT
DET	DETECTOR	RW	RECYCLED WATER
DIA	DROP INLET	RWL	RAIN WATER LEADER
DIP	DIAMETER	R/W	RIGHT OF WAY
DIP	DUCTILE IRON PIPE	S	SOUTH
DR	DRIVE	S	SLOPE
DS	DOWNSPOUT	S.A.D.	SEE ARCHITECTURAL DRAWINGS
DWG	DOWNSTREAM	SCADA	SUPERVISORY CONTROL AND DATA ACQUISITION
D/W	DRAWING	SCC	SONOMA COUNTY CODE
E	EAST	SCH	SCHEDULE
EC	END HORIZONTAL CURVE	SD	STORM DRAIN
ECC	ECCENTRIC	SDCB	STORM DRAIN CATCH BASIN
EFFL	EFFLUENT (SEWER)	SDD	STORM DRAIN CLEANOUT
EG	EXISTING GROUND	SDDI	STORM DRAIN DROP INLET
EL	ELEVATION	SDE	STORM DRAIN EASEMENT
ELEC	ELECTRICAL	SDMH	STORM DRAIN MANHOLE
ELL	ELBOW	SE	SEWER EASEMENT
EP	EDGE OF PAVEMENT	S.E.D.	SEE ELECTRICAL DRAWINGS
ESMT	EASEMENT	SF	SQUARE FEET
EVC	END VERTICAL CURVE	SF	SUBGRADE
EW	EACH WAY	S.L.D.	SEE LANDSCAPE DRAWINGS
EX	EXISTING	SOF	SLIP ON FLANGE
EXIST	EXISTING	SO	SIDE OPENING (SD)
FC	FACE OF CURB	S.P.D.	SEE PLUMBING DRAWINGS
FCA	FLANGED COUPLING ADAPTER	SPEC	SPECIFICATION
FDC	FIRE DEPARTMENT CONNECTION	SS	STAINLESS STEEL
FES	FLARED END SECTION	SS	SANITARY SEWER
FF	FINISHED FLOOR	SSCO	SANITARY SEWER CLEANOUT
FG	FINISHED GRADE	S.S.D.	SEE STRUCTURAL DRAWINGS
FH	FIRE HYDRANT	SSMH	SANITARY SEWER MANHOLE
FL	FLOWLINE	ST	STREET
FL	FLOWLINE	STA	STATION
FLG	FLANGE	STD	STANDARD
FLSO	FLOWLINE OF SIDE OPENING	STL	STEEL
FLEX	FLEXIBLE	SVC	SERVICE
FM	FORCE MAIN (PRESSURE)	SWE	SIDEWALK EASEMENT
FRP	FIBERGLASS REINFORCED PLASTIC	S	SQUARE YARDS
FT	FEET	S/W	SIDEWALK
FTG	FOOTING	T	TANGENT
GALV	GALVANIZED	TAN	TANGENT
GB	GRADE BREAK	TB	TOP OF BOX
GPM	GALLONS PER MINUTE	TC	TOP OF CURB
GRD	GROUND	TCE	TEMPORARY CONSTRUCTION EASEMENT
GSP	GALVANIZED STEEL PIPE	TD	TOP OF DIKE
GV	GAS VALVE	TEL	TELEPHONE
GY	GATE VALVE	TEMP	TEMPORARY
HB	HOSE BIBB	TF	TOP OF FOUNDATION
HB	HEADER BOARD	TG	TOP OF GRATE
HDG	HOT DIPPED GALVANIZED	THD	THREADED
HDPE	HIGH DENSITY POLYETHYLENE	TS	TOP OF SLAB
HP	HIGH POINT	TT	TOP OF TAPER
HPG	HIGH PRESSURE GAS	TW	TOP OF WALL
HWY	HIGHWAY	TYP	TYPICAL
ICV	IRRIGATION CONTROL VALVE	UFFG	UNDER FLOOR FINISHED GRADE
ID	INSIDE DIAMETER	UNO	UNLESS NOTED OTHERWISE
INV	INVERT	VC	VERTICAL CURVE
IP	IRON PIPE	W	WEST
IPS	IRON PIPE SIZE	W	WATER
IRR	IRRIGATION	WM	WATER METER
ISA	INTERNATIONAL SYMBOL OF ACCESSIBILITY	WNF	WELD NECK FLANGE
JP	JOINT POLE	WS	WATER SERVICE
JT	JOINT TRENCH	WT	WEIGHT
L	ARC LENGTH	WV	WATER VALVE
L	LENGTH	*	DEGREES
LF	LINEAL FEET	'	MINUTES
LG	LIP OF GARAGE	"	SECONDS
LG	LIP OF GUTTER	Δ	DELTA
LP	LOW POINT	&	AND
LT	LEFT	⊙	AT
MAX	MAXIMUM	#	NUMBER
MBGR	METAL BEAM GUARD RAIL	#	POUNDS
MFR	MANUFACTURE	%	PERCENT
MG	MILLION GALLONS		
MH	MANHOLE		

LEGEND

LINES

BOUNDARY	----
PARCEL	=====
CENTER	-----
EASEMENT	-----

UTILITY LINES

	EXISTING	PROPOSED
STORM DRAIN		
WATER		
SEWER		
GAS		
ELECTRICAL		
TELEPHONE		
TELEVISION		
JOINT TRENCH		

TOPOGRAPHY

DROP INLET		
DROP INLET WITH SIDE OPENINGS		
WATER METER		
WATER VALVE		
BLOWOFF		
FIRE HYDRANT		
THRUST BLOCK		
GAS METER		
STORM DRAIN MANHOLE		
STORM DRAIN CATCH BASIN		
SEWER MANHOLE		
SEWER CLEANOUT		
JOINT POLE		
LIGHT STANDARD		
GUY/ANCHOR		
CURB & GUTTER		
AC DIKE		
FENCE		
CHAIN LINK FENCE		
DITCH/SWALE		
MONUMENT		
TREE PROTECTION		
TREE TO BE SAVED		
TREE TO BE REMOVED		
DAYLIGHT (CUT)		
DAYLIGHT (FILL)		
SILT FENCE		

GRADING AND DRAINAGE NOTES

- EXISTING DRAINAGE COURSES RECEIVING WATERS FROM THE PROJECT SITE AND LOCATED THROUGHOUT THE PROJECT SITE SHALL REMAIN OPEN AND CLEAR OF DEBRIS TO PROPERLY CONVEY STORM WATER. IF EXISTING DRAINAGE COURSES RECEIVING WATERS FROM THE PROJECT SITE ARE LOCATED IN THE COUNTY RIGHT-OF-WAY AND NEED MAINTENANCE, CONTACT THE DEPARTMENT OF TRANSPORTATION AND PUBLIC WORKS AT (707) 565-2231 FOR FURTHER ASSISTANCE.
- THE CONTRACTOR SHALL CONTACT THE UNDERGROUND SERVICE ALERT (USA), AT 811, AT LEAST TWO WORKING DAYS, BUT NOT MORE THAN 14 CALENDAR DAYS, PRIOR TO EXCAVATION. THE CONTRACTOR SHALL UNCOVER RELEVANT UTILITIES TO VERIFY THEIR LOCATION AND ELEVATION. IF UNEXPECTED OR CONFLICTING UTILITIES ARE ENCOUNTERED DURING EXCAVATION, NOTIFY USA, THE UTILITY OWNER, AND/OR THE ENGINEER OF RECORD, IF APPLICABLE, IMMEDIATELY. UTILITIES INCLUDE BUT ARE NOT LIMITED TO WATER, SEWER, ELECTRICAL, GAS, TELEPHONE, AND CABLE/TV. THE EXCAVATOR SHALL DELINEATE WITH PAINT OR OTHER SUITABLE MARKINGS THE AREA TO BE EXCAVATED.
- IN THE EVENT CULTURAL RESOURCES (SUCH AS HISTORICAL, ARCHAEOLOGICAL, AND PALEONTOLOGICAL RESOURCES, AND HUMAN REMAINS) ARE DISCOVERED DURING GRADING OR OTHER CONSTRUCTION ACTIVITIES, WORK SHALL IMMEDIATELY BE HALTED WITHIN THE VICINITY OF THE FIND. THE NORTHWEST INFORMATION CENTER SHALL BE NOTIFIED AT (707) 568-8455. A QUALIFIED ARCHEOLOGIST SHALL BE CONSULTED FOR AN ON-SITE EVALUATION. ADDITIONAL MITIGATION MAY BE REQUIRED BY THE COUNTY PER THE ARCHEOLOGIST'S RECOMMENDATIONS AND SCC 11.16.050. IF HUMAN BURIALS OR HUMAN REMAINS ARE ENCOUNTERED, THE CONTRACTOR SHALL ALSO NOTIFY THE COUNTY CORONER AT (707) 565-5070.
- SHOULD GRADING OPERATIONS ENCOUNTER HAZARDOUS MATERIALS, OR WHAT APPEAR TO BE HAZARDOUS MATERIALS, STOP WORK IMMEDIATELY IN THE CONTAMINATED AREA AND CONTACT 911 OR THE APPROPRIATE AGENCY FOR FURTHER INSTRUCTION.
- EQUIPMENT SHALL NOT CROSS OR DISTURB CHANNELS OF ACTIVELY FLOWING STREAMS WITHOUT A PRMD APPROVED ROLLING PERMIT AND BEST MANAGEMENT PRACTICES (SCC 23.1 AND 11.16.060.D).
- GRADING AND DRAINAGE IMPROVEMENTS SHALL BE SET BACK FROM LAKES, PONDS, STREAMS, AND WETLANDS IN COMPLIANCE WITH THE REQUIREMENTS OF SCC 11.16.100, 11.16.120, AND 11.16.130. EXISTING VEGETATION SHALL BE RETAINED IN STREAM SETBACK AREAS TO FILTER SOIL AND OTHER POLLUTANTS CARRIED IN STORM WATER.
- CONTOURS, ELEVATIONS, AND SHAPES OF FINISHED SURFACES SHALL BE BLENDED WITH ADJACENT NATURAL TERRAIN TO ACHIEVE A CONSISTENT GRADE AND NATURAL APPEARANCE. BORDERS OF CUT SLOPES AND FILLS SHALL BE ROUNDED OFF TO A MINIMUM RADIUS OF FIVE FEET TO BLEND WITH THE NATURAL TERRAIN.
- FILL MATERIAL SHALL NOT INCLUDE ORGANIC, FROZEN, OR OTHER DELETERIOUS MATERIALS. NO ROCK OR SIMILAR IRREDUCIBLE MATERIAL GREATER THAN SIX INCHES IN ANY DIMENSION SHALL BE INCLUDED IN FILLS EXCEPT WHERE APPROVED BY THE ENGINEER. FILLS SHALL BE CONSTRUCTED IN LIFTS NOT EXCEEDING EIGHT INCHES IN DEPTH. COMPLETED FILLS SHALL BE STABLE, WELL-INTEGRATED, AND BONDED TO ADJACENT MATERIALS AND THE MATERIALS ON WHICH THEY REST. FILLS SHALL BE COMPETENT TO SUPPORT ANTICIPATED LOADS AND BE STABLE AT THE DESIGN SLOPES SHOWN ON THE APPROVED PLANS AND SPECIFICATIONS OR AS DIRECTED BY THE ENGINEER.
- GROUND SURFACES SHALL BE PREPARED TO RECEIVE FILL BY REMOVING VEGETATION, TOPSOIL, AND OTHER UNSUITABLE MATERIALS, AND SCARIFYING THE GROUND TO PROVIDE A BOND WITH THE FILL MATERIAL.
- FILL SHALL NOT BE PLACED ON NATURAL SLOPES STEEPER THAN 2H:1V (50 PERCENT).
- FILLS INTENDED TO SUPPORT STRUCTURES OR SURCHARGES OR GREATER THAN 2' IN DEPTH SHALL BE COMPACTED TO A MINIMUM OF 90 PERCENT OF MAXIMUM DRY DENSITY, AS DETERMINED BY ASTM D 1557, MODIFIED PROCTOR.
AS FOLLOWS:
(1) FILL GREATER THAN THREE FEET IN DEPTH SHALL BE COMPACTED TO MIN 88% OF MAX DRY DENSITY OR AS SPECIFIED BY THE ENGINEER.
(2) FILLS NO GREATER THAN THREE FEET IN DEPTH SHALL BE COMPACTED AS DIRECTED BY THE ENGINEER OR TO MIN 85% OF MAX DRY DENSITY.
- FILLS GREATER THAN 3' DEPTH SHALL BE KEYED INTO THE SLOPE OF THE TOE AND PLACED ON BENCHED TERRACES.
- BLASTING SHALL NOT BE ALLOWED.
- CONTRACTOR SHALL NOTIFY CITY AT LEAST 48 HOURS PRIOR TO INITIATING WORK.

MEASUREMENT AND PAYMENT NOTES

- CONCRETE CURBS AND GUTTERS OF THE VARIOUS TYPES INDICATED WILL BE MEASURED ALONG THE FRONT FACE OF THE CURB LINE THROUGH INLETS, DEPRESSIONS, CATCH BASINS, DRIVEWAYS, RAMPS, ETC., BY THE LINEAL FOOT TO THE NEAREST 0.1 FOOT FOR EACH TYPE, COMPLETE IN PLACE.
- CURB HEIGHTS AND GUTTER WIDTHS MAY VARY PER PLAN, AND NO ADJUSTMENT IN THE UNIT PRICES INDICATED IN THE BID SCHEDULE WILL BE MADE.
- CONCRETE SIDEWALKS, CURB RAMPS, AND APRONS WILL BE MEASURED TO THE NEAREST 0.1 SQUARE FOOT, COMPLETE IN PLACE.



LAUREL DRIVE & PETALUMA HILL ROAD SIDEWALK & SIGNAL IMPROVEMENTS

ROHNERT PARK, CALIFORNIA

REVISIONS

NO.	DATE	DESCRIPTION

ON A FULL-SCALE DRAWING, LENGTH OF BAR BELOW IS 1-INCH. IF BAR MEASURES LESS THAN 1-INCH, THIS SHEET WAS PLOTTED AT A REDUCED SCALE, WHICH MAY REQUIRE ADJUSTMENT OF SCALE(S) SHOWN ON DRAWING.



PROJECT 4442.00	DATE APRIL 2022
DRAWN BY BKU	CHECKED BY MSJ

ABBREVIATIONS
LEGEND & NOTES

SHEET NO.

2 OF 6

APPROVED FOR CONSTRUCTION

VANESSA MARIN GARRETT, R.C.E. 84141
CITY ENGINEER, CITY OF ROHNERT PARK
LICENSE EXPIRES SEPTEMBER 30, 2023

7/26/2023
DATE

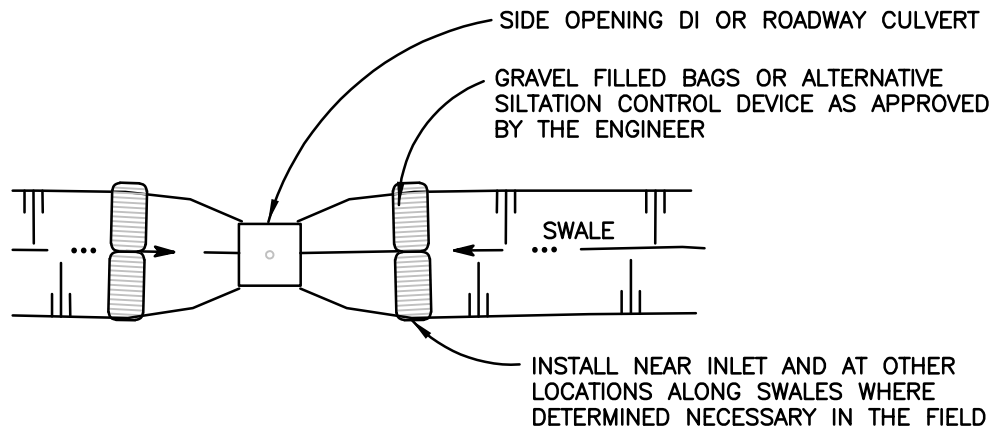
EROSION PREVENTION AND SEDIMENT CONTROL NOTES

- PERFORM EROSION PREVENTION AND SEDIMENT CONTROL IN ACCORDANCE WITH CHAPTER 11 AND 11A OF THE SONOMA COUNTY CODE (SCC).
- THE APPROVED PLANS SHALL CONFORM TO THE PERMIT AND RESOURCE MANAGEMENT DEPARTMENTS (PRMD) EROSION PREVENTION AND SEDIMENT CONTROL BEST MANAGEMENT PRACTICES (BMP'S) GUIDE AS POSTED ON THE PRMD WEBSITE AND DETAILS FROM THESE PLANS.
- THE CONTRACTOR SHALL BE RESPONSIBLE FOR PREVENTING STORM WATER POLLUTION GENERATED FROM THE CONSTRUCTION SITE. WORK SITES WITH INADEQUATE EROSION PREVENTION AND/OR SEDIMENT CONTROL MAY BE SUBJECT TO A STOP WORK ORDER AND/OR ADDITIONAL COUNTY INSPECTION FEES TO VERIFY COMPLIANCE WITH SONOMA COUNTY CODE (SCC).
- IF DISCREPANCIES OCCUR BETWEEN THESE NOTES, MATERIAL REFERENCED ON THE APPROVED PLANS OR MANUFACTURERS RECOMMENDATIONS, THEN THE MOST PROTECTIVE SHALL APPLY.
- AT ALL TIMES THE CONTRACTOR SHALL BE RESPONSIBLE FOR OBTAINING AND COMPLYING WITH THE STATE OF CALIFORNIA NATIONAL POLLUTANT DISCHARGE ELIMINATION SYSTEM (NPDES) GENERAL PERMIT FOR STORM WATER DISCHARGES ASSOCIATED WITH CONSTRUCTION AND LAND DISTURBING ACTIVITIES SUCH AS CLEARING, GRADING, EXCAVATION, STOCKPILING, AND RECONSTRUCTION OF EXISTING FACILITIES INVOLVING REMOVAL AND REPLACEMENT.
- THE CONTRACTOR MUST IMPLEMENT AN EFFECTIVE COMBINATION OF EROSION PREVENTION AND SEDIMENT CONTROL ON ALL DISTURBED AREAS DURING THE RAINY SEASON (OCTOBER 1 – APRIL 30). GRADING AND DRAINAGE IMPROVEMENT SHALL BE PERMITTED DURING THE RAINY SEASON ONLY WHEN ON-SITE SOIL CONDITIONS PERMIT THE WORK TO BE PERFORMED IN COMPLIANCE WITH SONOMA COUNT CODE (SCC).
- DURING THE RAINY SEASON, STORM WATER BMP'S REFERENCED OR DETAILED IN PRMD'S BMP GUIDE SHALL BE IMPLEMENTED AND FUNCTIONAL ON THE SITE AT ALL TIMES AND THE AREA OF ERODIBLE LAND EXPOSED AT ANY ONE TIME DURING THE WORK SHALL NOT EXCEED ONE ACRE OR 20 PERCENT OF THE PERMITTED WORK AREA, WHICHEVER IS GREATER, AND THE TIME OF EXPOSURE SHALL BE MINIMIZED TO THE MAXIMUM EXTENT PRACTICABLE.
- DURING THE NON-RAINY SEASON, ON ANY DAY WHEN THE NATIONAL WEATHER SERVICE FORECAST IS A CHANCE OF RAIN OF 30 PERCENT OR GREATER WITHIN THE NEXT 24 HOURS, STORM WATER BMP'S SHALL BE IMPLEMENTED AND FUNCTIONAL ON THE SITE TO PREVENT SOIL AND OTHER POLLUTANT DISCHARGES. AT ALL OTHER TIMES, BMP'S SHOULD BE STORED ON SITE IN PREPARATION FOR INSTALLATION PRIOR TO RAIN EVENTS.
- EROSION PREVENTION AND SEDIMENT CONTROL BMP'S SHALL BE INSPECTED BY THE CONTRACTOR BEFORE FORECASTED STORM EVENTS AND AFTER STORM EVENTS TO ENSURE BMP'S ARE FUNCTIONING PROPERLY. EROSION PREVENTION AND SEDIMENT CONTROL BMP'S THAT HAVE FAILED OR ARE NO LONGER EFFECTIVE SHALL BE PROMPTLY REPLACED. EROSION PREVENTION AND SEDIMENT CONTROL BMP'S SHALL BE MAINTAINED UNTIL DISTURBED AREAS ARE STABILIZED.
- THE LIMITS OF GRADING SHALL BE DEFINED AND MARKED ON SITE TO PREVENT DAMAGE TO SURROUNDING TREES AND OTHER VEGETATION. PRESERVATION OF EXISTING VEGETATION SHALL OCCUR TO THE MAXIMUM EXTENT PRACTICABLE. ANY EXISTING VEGETATION WITHIN THE LIMITS OF GRADING THAT IS TO REMAIN UNDISTURBED BY THE WORK SHALL BE IDENTIFIED AND PROTECTED FROM DAMAGE BY MARKING, FENCING, OR OTHER MEASURES.
- CHANGES TO THE EROSION PREVENTION AND SEDIMENT CONTROL PLAN MAY BE MADE TO RESPOND TO FIELD CONDITIONS IF THE ALTERNATIVE BMP'S ARE EQUIVALENT OR MORE PROTECTIVE THAN THE BMP'S SHOWN ON THE APPROVED PLANS. ALTERNATIVE BMP'S ARE SUBJECT TO REVIEW AND APPROVAL BY THE ENGINEER.
- DISCHARGES OF POTENTIAL POLLUTANTS FROM CONSTRUCTION SITES SHALL BE PREVENTED USING SOURCE CONTROLS TO THE MAXIMUM EXTENT PRACTICABLE. POTENTIAL POLLUTANTS INCLUDE BUT ARE NOT LIMITED TO: SEDIMENT, TRASH, NUTRIENTS, PATHOGENS, PETROLEUM HYDROCARBONS, METALS, CONCRETE, CEMENT, ASPHALT, LIME, PAINT, STAINS, GLUES, WOOD PRODUCTS, PESTICIDES, HERBICIDES, CHEMICALS, HAZARDOUS WASTE, SANITARY WASTE, VEHICLE OR EQUIPMENT WASH WATER, AND CHLORINATED WATER.
- ENTRANCE(S) TO THE CONSTRUCTION SITE SHALL BE MAINTAINED IN A CONDITION THAT WILL PREVENT TRACKING OR FLOWING OF POTENTIAL POLLUTANTS OFFSITE. POTENTIAL POLLUTANTS DEPOSITED ON PAVED AREAS WITHIN THE COUNTY RIGHT-OF-WAY, SUCH AS ROADWAYS AND SIDEWALKS, SHALL BE PROPERLY DISPOSED OF AT THE END OF EACH WORKING DAY OR MORE FREQUENTLY AS NECESSARY. THE CONTRACTOR SHALL BE RESPONSIBLE FOR CLEANING CONSTRUCTION VEHICLES LEAVING THE SITE ON A DAILY BASIS TO PREVENT DUST, SILT, AND DIRT FROM BEING RELEASED OR TRACKED OFFSITE. ALL SEDIMENT DEPOSITED ON PAVED ROADWAYS SHALL BE REMOVED AT THE END OF EACH WORKING DAY OR MORE OFTEN, AS NECESSARY.
- ALL DISTURBED AREAS SHALL BE PROTECTED BY USING EROSION PREVENTION BMP'S TO THE MAXIMUM EXTENT PRACTICABLE, SUCH AS ESTABLISHING VEGETATION COVERAGE, HYDROSEEDING, STRAW MULCH, GEOTEXTILES, PLASTIC COVERS, BLANKETS, OR MATS. TEMPORARY REVEGETATION SHALL BE INSTALLED AS SOON AS PRACTICAL AFTER VEGETATION REMOVAL, BUT IN ALL CASES PRIOR TO OCTOBER 1. PERMANENT REVEGETATION OR LANDSCAPING SHALL BE INSTALLED PRIOR TO FINAL INSPECTION.
- WHENEVER IT IS NOT POSSIBLE TO USE EROSION PREVENTION BMP'S ON EXPOSED SLOPES, SEDIMENT CONTROL BMP'S SUCH AS FIBER ROLLS AND SILT FENCES SHALL BE INSTALLED TO PREVENT SEDIMENT MIGRATION. FIBER ROLLS AND SILT FENCES SHALL BE TRENCHED AND KEYED INTO THE SOIL AND INSTALLED ON CONTOUR. SILT FENCES SHALL BE INSTALLED APPROXIMATELY 2 TO 5 FEET FROM TOE OF SLOPE.
- HYDROSEEDING SHALL BE CONDUCTED IN A THREE STEP PROCESS. FIRST, EVENLY APPLY SEED MIX AND FERTILIZER TO THE EXPOSED SLOPE. SECOND, EVENLY APPLY MULCH OVER THE SEED AND FERTILIZER. THIRD, STABILIZE THE MULCH IN PLACE. AN EQUIVALENT SINGLE STEP PROCESS, WITH SEED, FERTILIZER, WATER, AND BONDED FIBERS IS ACCEPTABLE.

APPLICATIONS SHALL BE BROADCASTED MECHANICALLY OR MANUALLY AT THE RATES SPECIFIED BELOW. SEED MIX AND FERTILIZER SHALL BE WORKED INTO THE SOIL BY ROLLING OR TAMPING. IF STRAW IS USED AS MULCH, STRAW SHALL BE DERIVED FROM WHEAT, RICE, OR BARLEY AND BE APPROXIMATELY SIX TO EIGHT INCHES IN LENGTH. STABILIZATION OF MULCH SHALL BE DONE HYDRAULICALLY BY APPLYING AN EMULSION OR MECHANICALLY BY CRIMPING OR PUNCHING THE MULCH INTO THE SOIL. EQUIVALENT METHODS AND MATERIALS MAY BE USED ONLY IF THEY ADEQUATELY PROMOTE VEGETATION GROWTH AND PROTECT EXPOSED SLOPES.

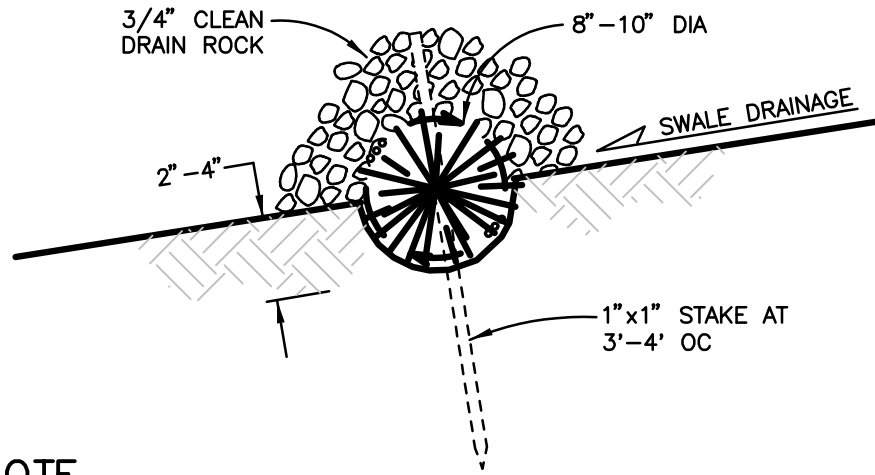
MATERIALS	APPLICATION RATE (POUNDS PER ACRE)
SEED MIX	
Bromus mollis (BLANDO BROME)	40
Trifolium hirtum (HYKON ROSE CLOVER)	20
FERTILIZER	
16-20-0 & 15% SULPHUR	500
MULCH	
STRAW	4000
HYDRAULIC STABILIZING*	
M-BINDER OR SENTINEL	75-100
EQUIVALENT MATERIAL	PER MANUFACTURER
*NON-ASPHALTIC, DERIVED FROM PLANTS	

- DUST CONTROL SHALL BE PROVIDED BY CONTRACTOR DURING ALL PHASES OF CONSTRUCTION OR AS DIRECTED BY THE ENGINEER.
- STORM DRAIN INLETS SHALL BE PROTECTED FROM POTENTIAL POLLUTANTS UNTIL DRAINAGE CONVEYANCE SYSTEMS ARE FUNCTIONAL AND CONSTRUCTION IS COMPLETE.
- ENERGY DISSIPATERS SHALL BE INSTALLED AT STORM DRAIN OUTLETS WHICH MAY CONVEY EROSION STORM WATER FLOW.
- SOIL, MATERIAL STOCKPILES, AND FERTILIZING MATERIAL SHALL BE PROPERLY PROTECTED WITH PLASTIC COVERS OR EQUIVALENT BMP'S TO MINIMIZE SEDIMENT AND POLLUTANT TRANSPORT FROM THE CONSTRUCTION SITE.
- SOLID WASTE, SUCH AS TRASH, DISCARDED BUILDING MATERIALS AND DEBRIS, SHALL BE PLACED IN DESIGNATED COLLECTION AREAS OR CONTAINERS. THE CONSTRUCTION SITE SHALL BE CLEARED OF SOLID WASTE DAILY OR AS NECESSARY. REGULAR REMOVAL AND PROPER DISPOSAL SHALL BE COORDINATED BY THE CONTRACTOR.
- A CONCRETE WASHOUT AREA SHALL BE DESIGNATED TO CLEAN CONCRETE TRUCKS AND TOOLS. AT NO TIME SHALL CONCRETE PRODUCTS AND WASTE BE ALLOWED TO ENTER COUNTY WATERWAYS SUCH AS CREEKS OR STORM DRAINS. NO WASHOUT OF CONCRETE, MORTAR MIXERS, OR TRUCKS SHALL BE ALLOWED ON SOIL. CONCRETE WASTE SHALL BE PROPERLY DISPOSED.
- PROPER APPLICATION, CLEANING, AND STORAGE OF POTENTIALLY HAZARDOUS MATERIALS, SUCH AS PAINTS AND CHEMICALS, SHALL BE CONDUCTED TO PREVENT THE DISCHARGE OF POLLUTANTS.
- TEMPORARY RESTROOMS AND SANITARY FACILITIES SHALL BE LOCATED AND MAINTAINED DURING CONSTRUCTION ACTIVITIES TO PREVENT THE DISCHARGE OF POLLUTANTS.
- APPROPRIATE VEHICLE STORAGE, FUELING, MAINTENANCE, AND CLEANING AREAS SHALL BE DESIGNATED AND MAINTAINED TO PREVENT DISCHARGE OF POLLUTANTS.



SEDIMENT BARRIER ON SWALES

NOT TO SCALE

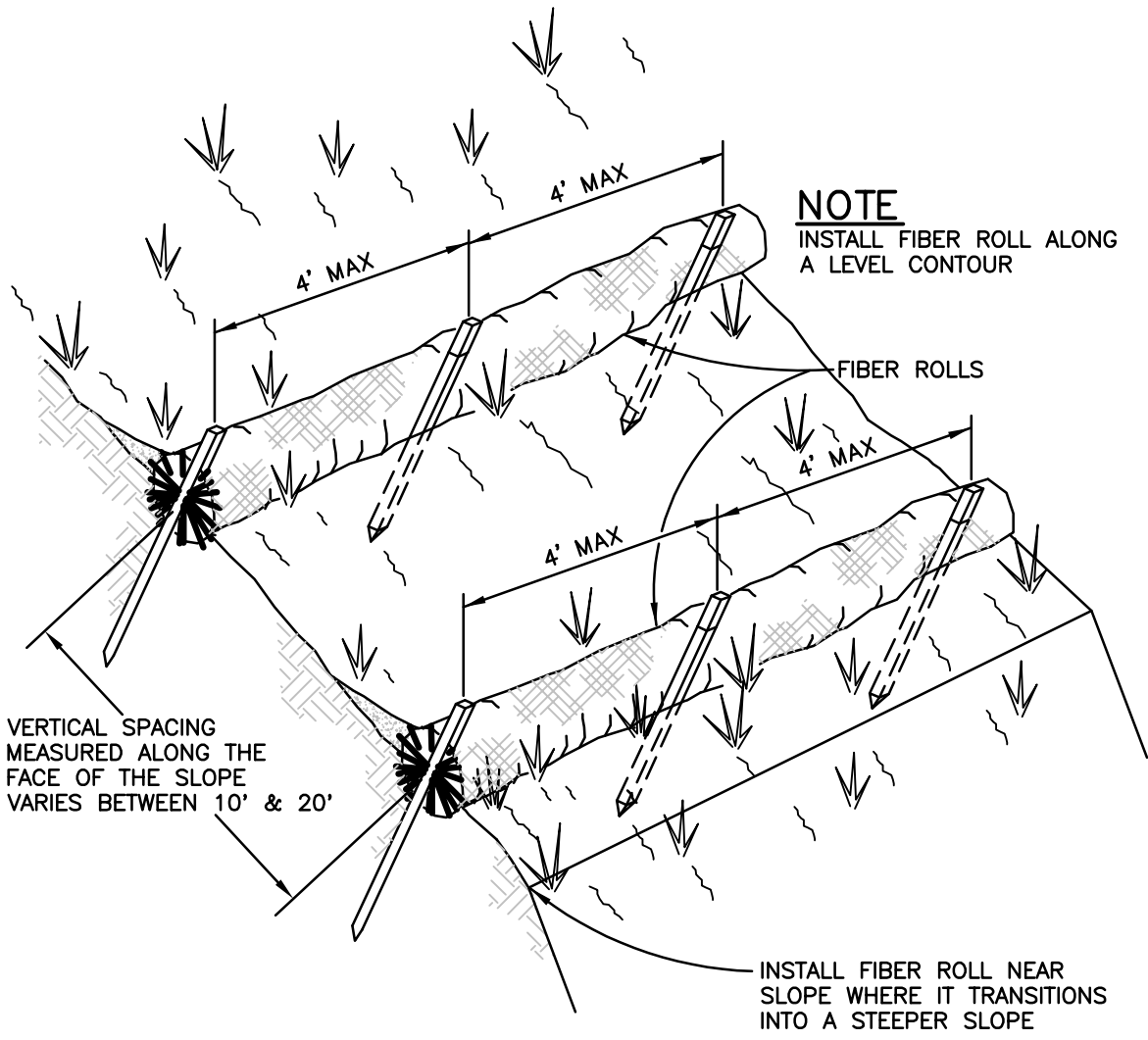


NOTE

- FIBER ROLL INSTALLATION REQUIRES THE PLACEMENT AND SECURE STAKING OF THE ROLL IN A TRENCH, 2"–4" DEEP, DUG ON A "V" PATTERN INTO THE SIDES AND BOTTOM OF THE SWALE. RUNOFF MUST NOT BE ALLOWED TO RUN UNDER OR AROUND ROLL. COVER THE FIBER ROLL IN THE FLOWLINE OF THE SWALE WITH 3/4" CLEAN DRAIN ROCK TO PROVIDE ADDITIONAL FILTERING.

FIBER ROLL SWALE CHECK

NOT TO SCALE



NOTES

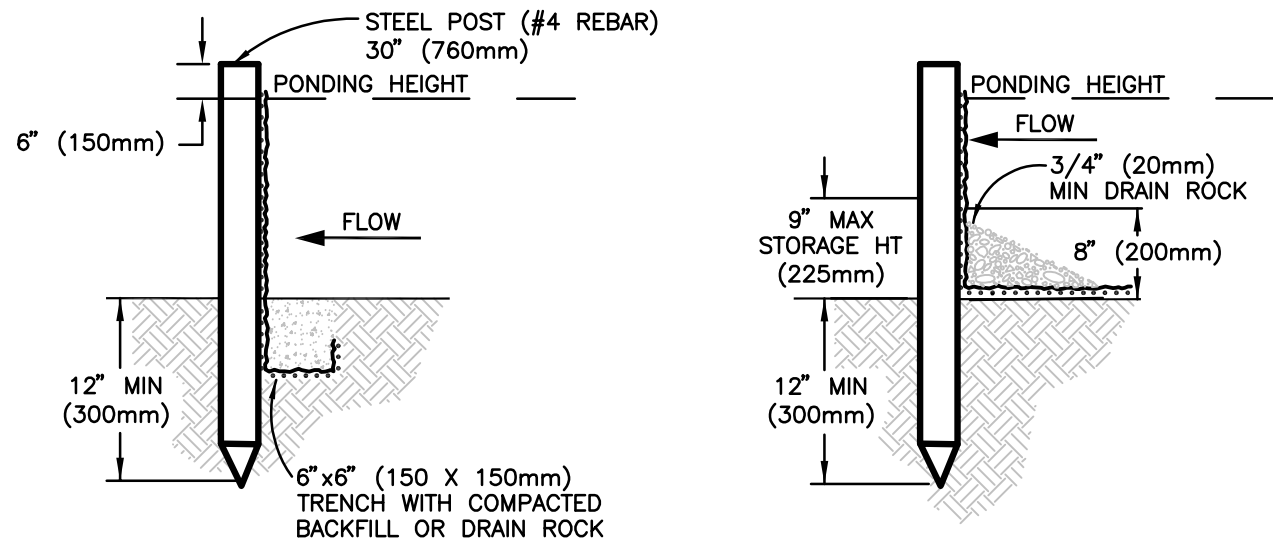
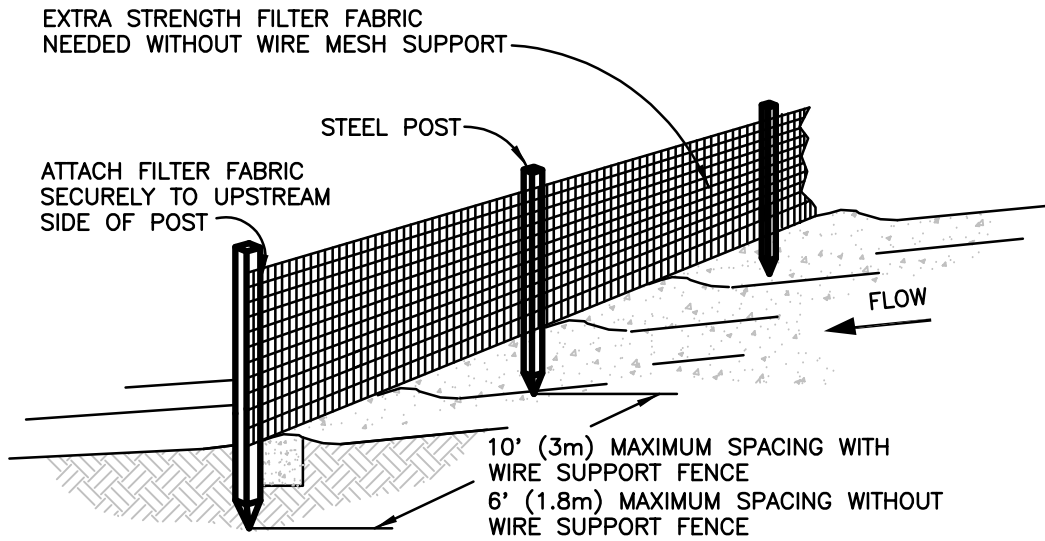
- FIBER ROLL INSTALLATION REQUIRES THE PLACEMENT AND SECURE STAKING OF THE ROLL IN A TRENCH, 2"–4" DEEP, DUG ON CONTOUR. RUNOFF MUST NOT BE ALLOWED TO RUN UNDER OR AROUND ROLL.
- FIBER ROLLS TO BE PLACED IN A ROW WITH THE ENDS TIGHTLY ABUTTING. USE STRAW, ROCKS, OR FILTER FABRIC TO FILL GAPS BETWEEN THE ROLLS AND TAMP THE BACKFILL MATERIAL TO PREVENT EROSION OR FLOW AROUND FIBER ROLLS.
- FIBER ROLLS SHALL BE UTILIZED ON ALL CUT OR FILL SLOPES GREATER THAN 4' IN VERTICAL HEIGHT.

FIBER ROLLS ON SLOPE

NOT TO SCALE

NOTES

- SILT FENCE SHALL BE PLACED ON SLOPE CONTOURS TO MAXIMIZE PONDING EFFICIENCY.
- INSPECT AND REPAIR FENCE AFTER EACH STORM EVENT AND REMOVE SEDIMENT WHEN NECESSARY. 9" (225mm) MAXIMUM RECOMMENDED STORAGE HEIGHT.
- REMOVED SEDIMENT SHALL BE DEPOSITED TO AN AREA THAT WILL NOT CONTRIBUTE SEDIMENT OFF-SITE AND CAN BE PERMANENTLY STABILIZED.



TRENCH DETAIL

INSTALLATION WITHOUT TRENCHING

SILT FENCE

NOT TO SCALE

Brelje & Race

CONSULTING ENGINEERS
475 Aviation Boulevard, Suite 120
Santa Rosa, CA 95403
v: 707-576-1322
f: 707-576-0469
www.brce.com



LAUREL DRIVE &
PETALUMA HILL
ROAD SIDEWALK
& SIGNAL
IMPROVEMENTS

ROHNERT PARK, CALIFORNIA

REVISIONS

NO.	DATE	DESCRIPTION

ON A FULL-SCALE DRAWING, LENGTH OF BAR BELOW IS 1-INCH. IF BAR MEASURES LESS THAN 1-INCH, THIS SHEET WAS PLOTTED AT A REDUCED SCALE, WHICH MAY REQUIRE ADJUSTMENT OF SCALE(S) SHOWN ON DRAWING.

PROJECT 4442.00	DATE APRIL 2022
DRAWN BY BKU	CHECKED BY MSJ

EC NOTES &
DETAILS

SHEET NO.

3 OF 6

APPROVED FOR CONSTRUCTION

Vanessa Marin Garrett

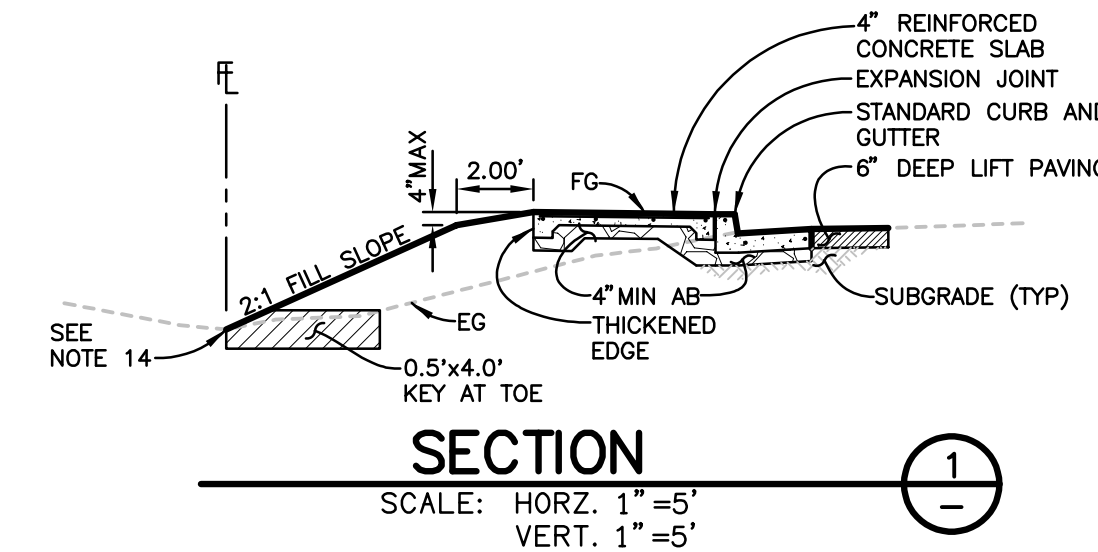
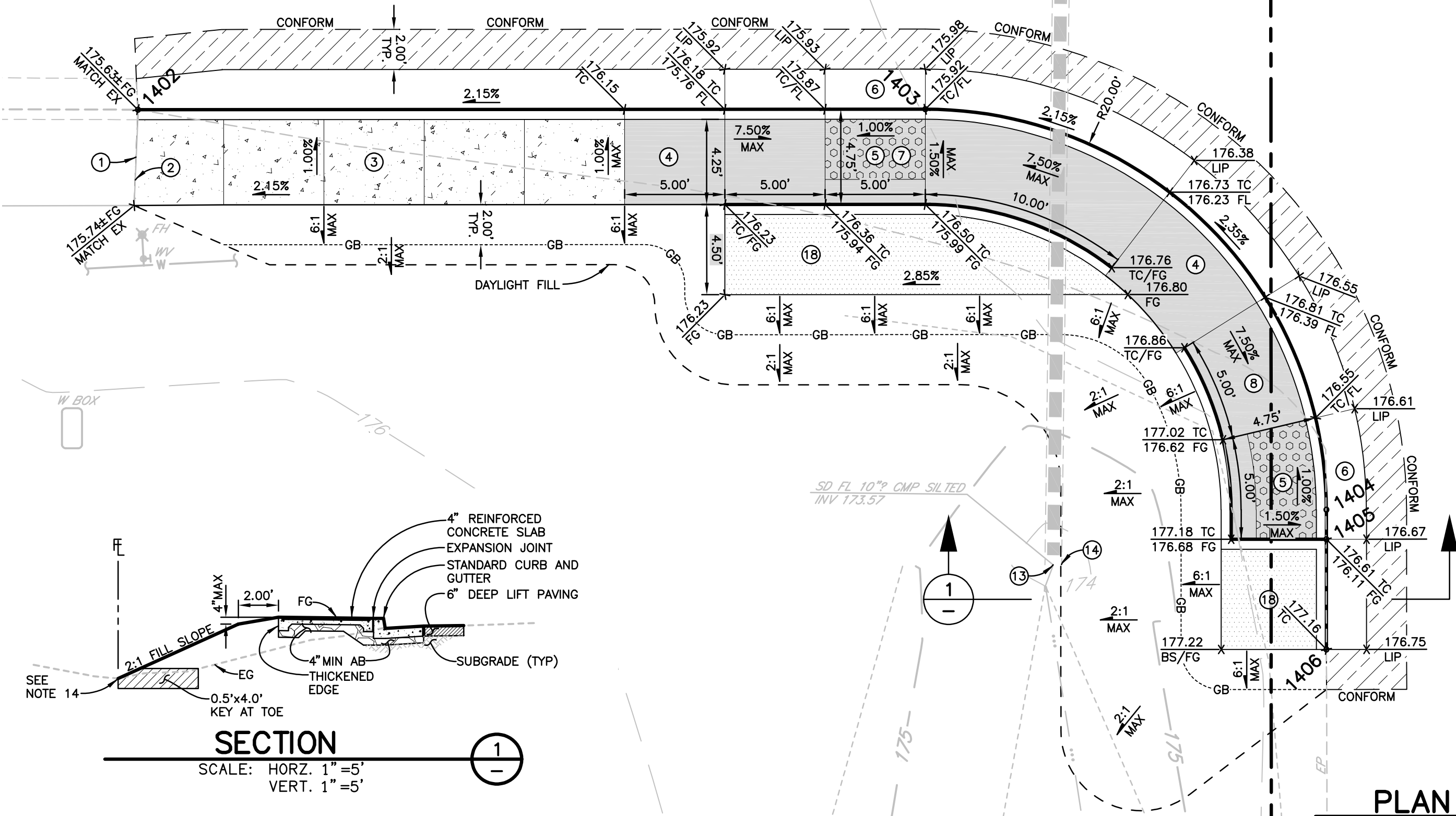
VANESSA MARIN GARRETT, R.C.E. 84141
CITY ENGINEER, CITY OF ROHNERT PARK
LICENSE EXPIRES SEPTEMBER 30, 2023

7/26/2023
DATE

CONSTRUCTION NOTES
(ONLY NOTES RELEVANT TO THIS SHEET ARE SHOWN)

- CONFORM TO EXISTING.
- INSTALL DOWELS AND EXPANSION JOINT BETWEEN NEW AND EXISTING SIDEWALK PER COUNTY STD 223.
- INSTALL NEW CURB, GUTTER AND SIDEWALK PER COUNTY STD 220 & 222. MATCH EXISTING GRADES AT THE END OF EXISTING SIDEWALK AND PROVIDE CONTINUOUS SLOPE IN DIRECTION OF DRAINAGE.
- RAMP LANDING OR TURNING AREA - MAX CROSS SLOPE <2.0% IN ANY DIRECTION OR AS INDICATED.
- INSTALL EMBEDDED DETECTABLE WARNING SURFACE.
- GUTTER COUNTERSLOPE IMMEDIATELY ADJACENT TO CURB RAMP SHALL NOT BE STEEPER THAN 5% MAX.
- INSTALL 'CASE C' CURB RAMP PER CALTRANS STANDARD PLAN RSP A88A AND COUNTY STD 224A & 224B.
- INSTALL 'CASE CH' CURB RAMP PER CALTRANS STANDARD PLAN RSP A88B AND COUNTY STD 224A & 224B.
- INSTALL 'CASE F' CURB RAMP PER CALTRANS STANDARD PLAN RSP A88A AND COUNTY STD 224A & 224B.
- CONSTRUCT 6" A1-6 CURB PER COUNTY STD 220.
- CONSTRUCT AC DIKE. REFER TO DETAIL ON SHEET 5.
- REMOVE EXISTING WHEEL STOPS AND INSTALL AC DIKE. REFER TO DETAIL ON SHEET 5.
- REGRADE SWALE TO EXPOSE ENDS OF EXISTING 10" CULVERT, CLEAN CULVERT INTERIOR FULL LENGTH.
- CONTRACTOR TO PIN TOE OF FILL SLOPE AT EXISTING DRAINAGE DITCH FLOWLINE.
- REMOVE EXISTING WIRE FENCE AND INSTALL NEW TERMINAL POST AND BRACING AS SHOWN ON DETAIL ON SHEET 5.
- REMOVE AND RELOCATE EXISTING ROADSIDE SIGN. SIGN TO BE FIELD LOCATED WITH ENGINEERS APPROVAL.
- REMOVE AND DISPOSE OF EXISTING ROADSIDE SIGN.
- INSTALL 4" REINFORCED CONCRETE SLAB AROUND NEW ELECTRICAL FACILITIES. REFER TO DETAIL ON SHEET 5. FOR LOCATION OF NEW ELECTRICAL FACILITIES REFER TO TRAFFIC SIGNAL & STRIPING PLAN ON SHEET 6.

LAUREL DRIVE



PLAN

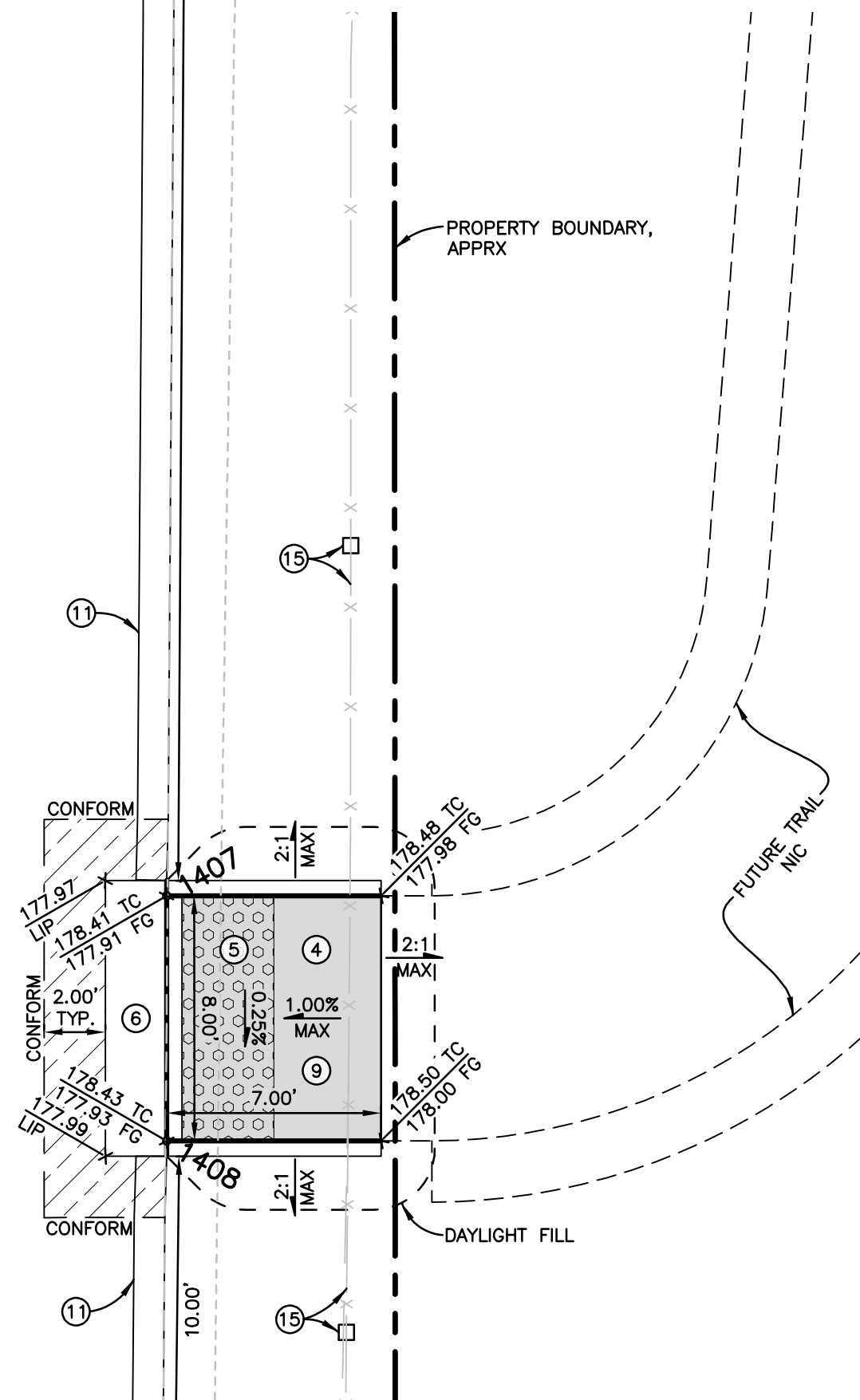
PETALUMA HILL ROAD

LAYOUT COORDINATE TABLE			
NO	NORTHING	EASTING	TYPE
1400	246475.985	1808992.820	TC/BC
1401	246479.374	1809000.067	TC/EC
1402	246447.001	1808960.772	TC/MATCH EX
1403	246447.021	1809000.047	TC/BC
1404	246427.031	1809020.057	TC/EC
1405	246425.560	1809020.058	TC/AP
1406	246420.060	1809020.061	TC/AP
1407	246432.055	1809071.854	TC/AP
1408	246424.055	1809071.858	TC/AP

AREA QUANTITIES	
DEEP LIFT PAVING, 6IN	12 TON
AC DIKE	140 LF
CURB AND GUTTER	94.2 LF
A1-6 CURB	8.0 LF
CURB RAMP	285.8 SF
SIDEWALK	103.7 SF
CONCRETE SLAB	91.5 SF
RELOCATE ROADSIDE SIGN	1 EA

LEGEND

- SIDEWALK AREA, 4" REINFORCED CONCRETE SIDEWALK OVER 4" CL2AB
- 6" REINFORCED CONCRETE PEDESTRIAN RAMP OVER 6" CL2AB
- 4" REINFORCED CONCRETE SLAB OVER 4" OF CL2AB
- DEEP LIFT PAVING, 6" HMA



APPROVED FOR CONSTRUCTION

VANESSA MARIN GARRETT, R.C.E. 84141
CITY ENGINEER, CITY OF ROHNERT PARK
LICENSE EXPIRES SEPTEMBER 30, 2023

7/26/2023
DATE

Brelje & Race
CONSULTING ENGINEERS
475 Aviation Boulevard, Suite 120
Santa Rosa, CA 95403
v: 707-576-1322
f: 707-576-0469
www.brce.com



LAUREL DRIVE &
PETALUMA HILL
ROAD SIDEWALK
& SIGNAL
IMPROVEMENTS

ROHNERT PARK, CALIFORNIA

REVISIONS

NO.	DATE	DESCRIPTION

ON A FULL-SCALE DRAWING, LENGTH OF BAR BELOW IS 1-INCH. IF BAR MEASURES LESS THAN 1-INCH, THIS SHEET WAS PLOTTED AT A REDUCED SCALE, WHICH MAY REQUIRE ADJUSTMENT OF SCALE(S) SHOWN ON DRAWING.

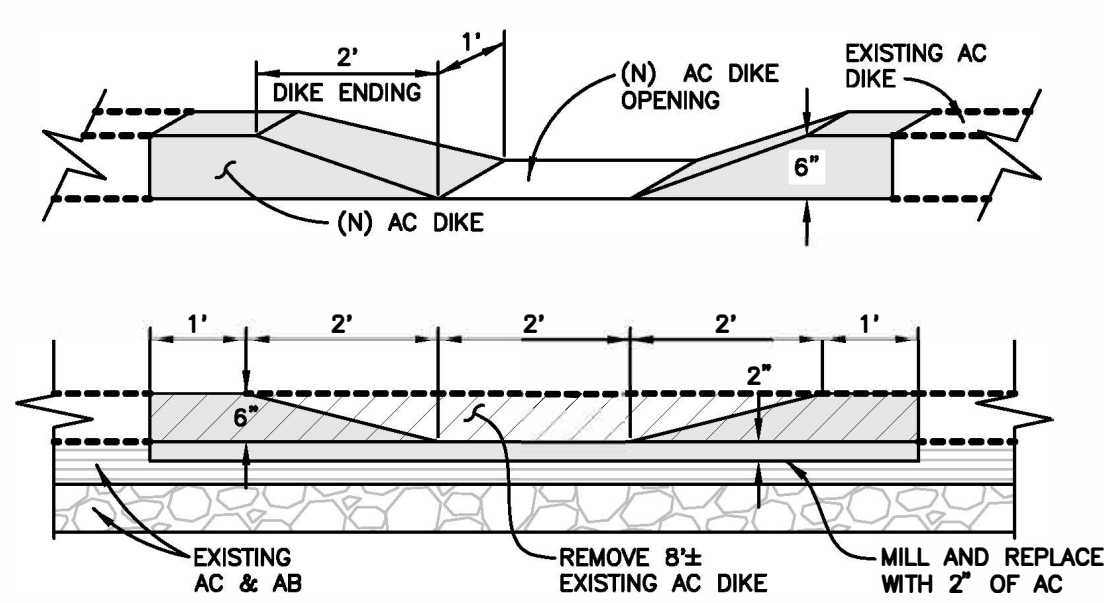
PROJECT 4442.00	DATE APRIL 2022
DRAWN BY BKU	CHECKED BY MSJ

ADA PLAN

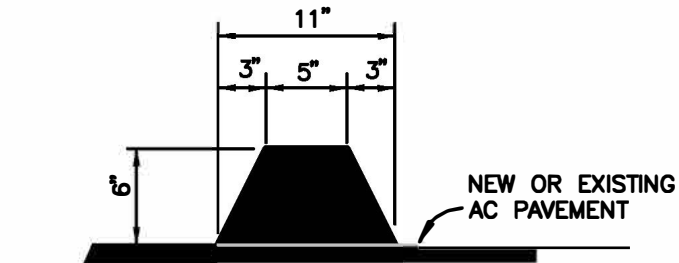
SHEET NO.

4 OF 6

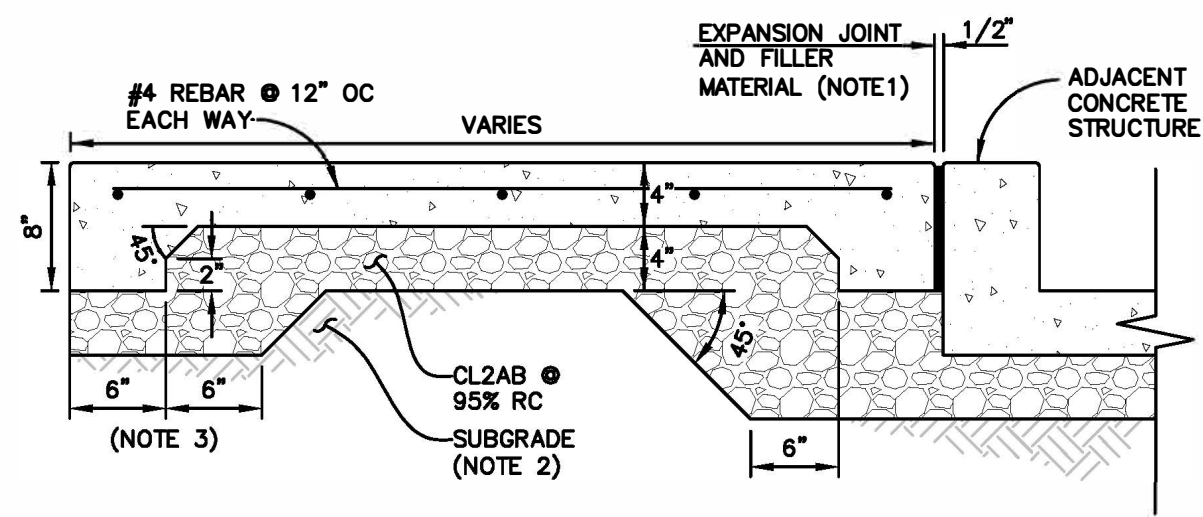
04-06-22 urbarek \\4442\dwg\4442 00\4442.00 PH3 - DETAIL.dwg TAB: 5 DETAILS



AC DIKE BREAK
NOT TO SCALE

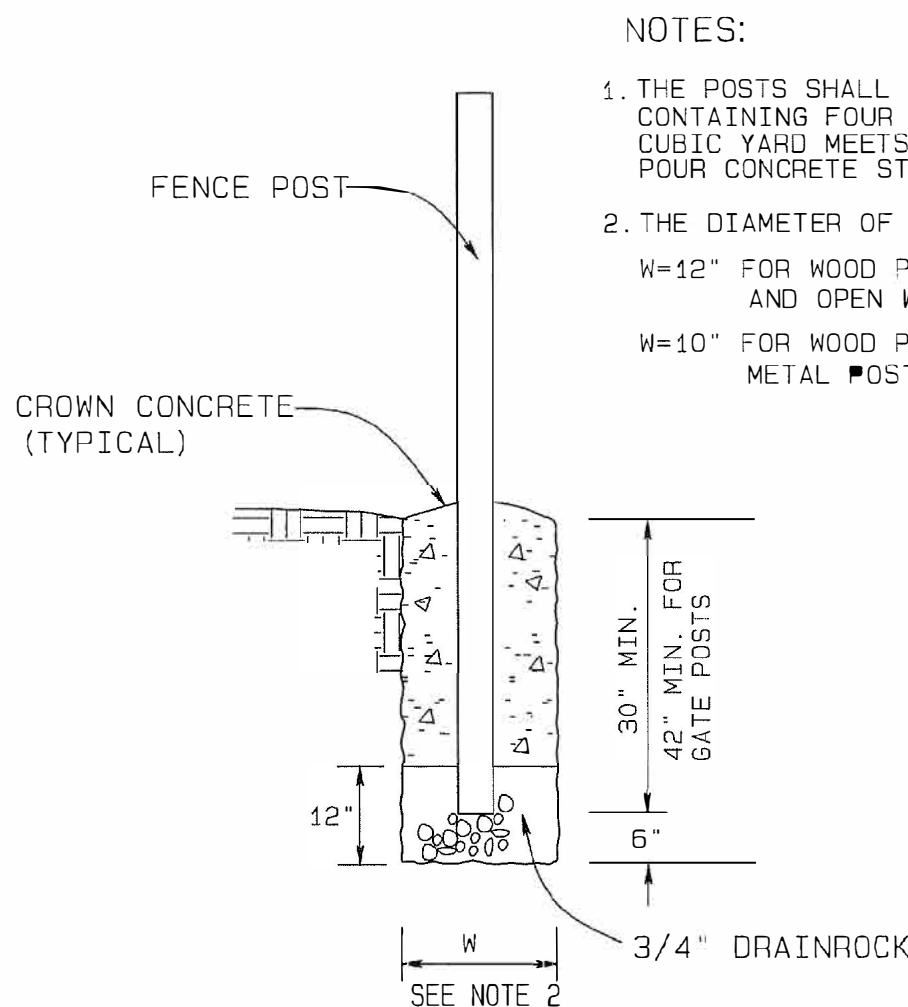


- NOTES**
- TACK COAT SHALL BE USED UNDER DIKE.
 - PROVIDE BREAKS IN AC DIKE AT EVENLY SPACED INTERVALS AS INDICATED ON PLAN.
 - AT A MINIMUM, THE OUTSIDE FACE OF DIKE, ON THE VEHICULAR SIDE, SHALL BE PAINTED WITH A 6' LONG WHITE STRIPE EVERY 10' OC.

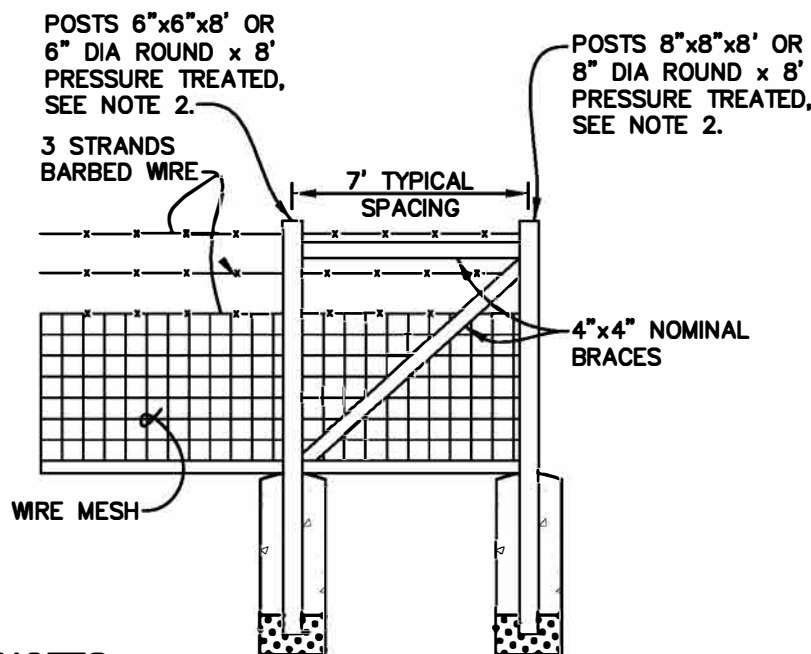


REINFORCED CONCRETE SLAB
NOT TO SCALE

- NOTES**
- APPLY 1/2" JOINT FILLER MATERIAL TO ALL ADJACENT CONCRETE CURBS, SIDEWALK, EQUIPMENT SLABS, PIERS, ETC.
 - MOISTURE CONDITION TO 2% OVER OPTIMUM AND COMPACT SUBGRADE TO MINIMUM 90% RC.
 - CLASS II AB UNDER SLAB THICKENED EDGE MAY BE OMITTED IN LIEU OF USING 12" THICKENED SLAB POURED NEAT MINIMUM OF 8" DEPTH



FENCING
NOT TO SCALE



- NOTES**
- WHEN FENCE CONSTRUCTION UTILIZES WOOD LINE POSTS, THE FENCE AND FENCE WIRES SHALL BE GROUNDED PER CALTRANS STANDARD SPECIFICATIONS SECTION 80-3.02
 - WOODEN POSTS AND CROSS BRACING USED FOR FENCING MATERIAL SHALL BE PRESSURE TREATED CONFORMING TO SECTION 80-3 OF THE CALTRANS SPECIFICATIONS EXCEPT THAT NO REDWOOD SHALL BE ALLOWED.

REFERENCED STANDARDS DRAWINGS

- CALTRANS RSP A88A & A88B
- SONOMA COUNTY STD 220, 222, 223, 224A & 224B



**LAUREL DRIVE &
PETALUMA HILL
ROAD SIDEWALK
& SIGNAL
IMPROVEMENTS**

ROHNERT PARK, CALIFORNIA

REVISIONS		
NO.	DATE	DESCRIPTION

ON A FULL SCALE DRAWING, LENGTH OF BAR BELOW IS 1-INCH. IF BAR MEASURES LESS THAN 1-INCH, THIS SHEET WAS PLOTTED AT A REDUCED SCALE WHICH MAY REQUIRE ADJUSTMENT OF SCALE(S) SHOWN ON DRAWING.

PROJECT 4442.00	DATE APRIL 2022
DRAWN BY BKU	CHECKED BY MSJ

DETAILS

SHEET NO.

5 OF 6

APPROVED FOR CONSTRUCTION

Vanessa Marin Garrett

7/26/2023
DATE

VANESSA MARIN GARRETT, R.C.E. 84141
CITY ENGINEER, CITY OF ROHNERT PARK
LICENSE EXPIRES SEPTEMBER 30, 2023

Apr 21, 2023 — 4:41pm

POLE AND EQUIPMENT SCHEDULE													
No.	STANDARD			VEHICLE SIGNAL				PED SIGNAL		PBA		LED LUMINAIRE	SPECIAL REQUIREMENTS
	TYPE	SMA	LMA	MAST MTG	ARM Ø	POLE MTG	Ø	Ø	MTG	Ø	ARROW		
A	17-3-100	20'	12'	MAS	Ø6	SV-2-T	Ø4 Ø6	Ø4P	SP-1-T	-	-	58W*	G7 SNS ON POLE: "Laurel Dr" (two sided), PEU, EVC
B	15TS	-	12'	-	-	-	-	Ø6P	SP-1-T	Ø6	RIGHT	58W*	
C	1B	-	-	-	-	TV-2-T	Ø5 Ø6	-	-	-	-		
D	24-4-100	35	12'	MAS MAS	Ø2 Ø5	SV-2-T	Ø2 Ø4	-	-	-	-	58W*	EVA
E	19-4-100	30'	12'	MAS	Ø4	SV-2-T	Ø2 Ø4	Ø4P	SP-1-T	Ø4P	RIGHT	58W*	SNS: "Petaluma Hill Rd" (one-sided), EVB
F	PPB POST	-	-	-	-	-	-	-	-	Ø4P	LEFT	-	INSTALL CONTIGUOUS WITH CURB AT BACK OF RAMP.
G	1B	-	-	-	-	-	-	Ø6P	SP-1-T	Ø6P	LEFT	-	

* = LEOTEK GCJ3-30J-MV-27K-5-XX-080

GENERAL NOTES (THIS SHEET ONLY)

1. WORK ON THESE PLANS SHALL CONFORM TO THE COUNTY OF SONOMA STANDARDS AND SPECIAL PROVISIONS, THE 2022 EDITION OF THE STATE OF CALIFORNIA DEPARTMENT OF TRANSPORTATION (CALTRANS) STANDARD SPECIFICATIONS, STANDARD PLANS, 2014 CALIFORNIA MUTCD, LATEST EDITION.

2. THE LOCATION OF PULL BOXES, POLE FOUNDATIONS, AND OTHER EQUIPMENT SHOWN ON THE PLANS ARE APPROXIMATE AND MAY BE CHANGED TO SUIT FIELD CONDITIONS AS DIRECTED BY THE COUNTY ENGINEER.

3. THIS PLAN IS ACCURATE FOR ELECTRICAL AND STRIPING WORK ONLY.

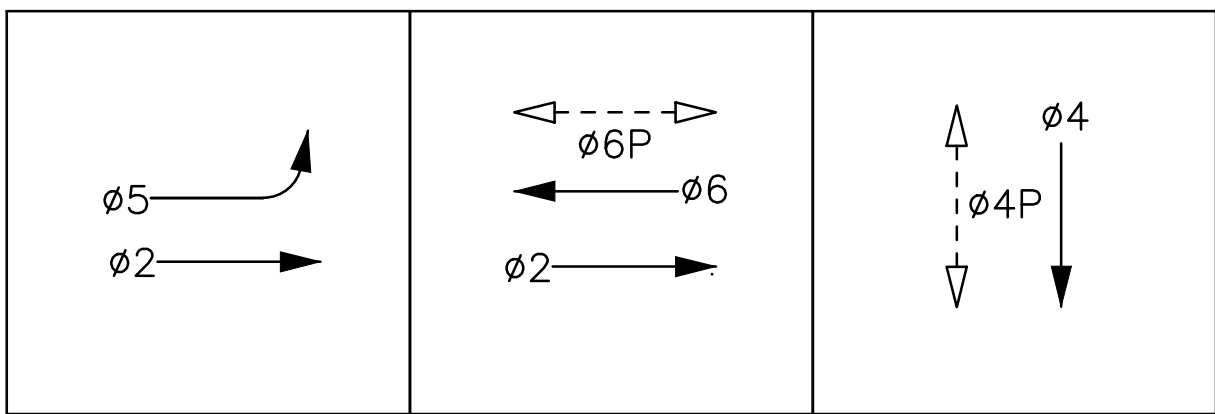
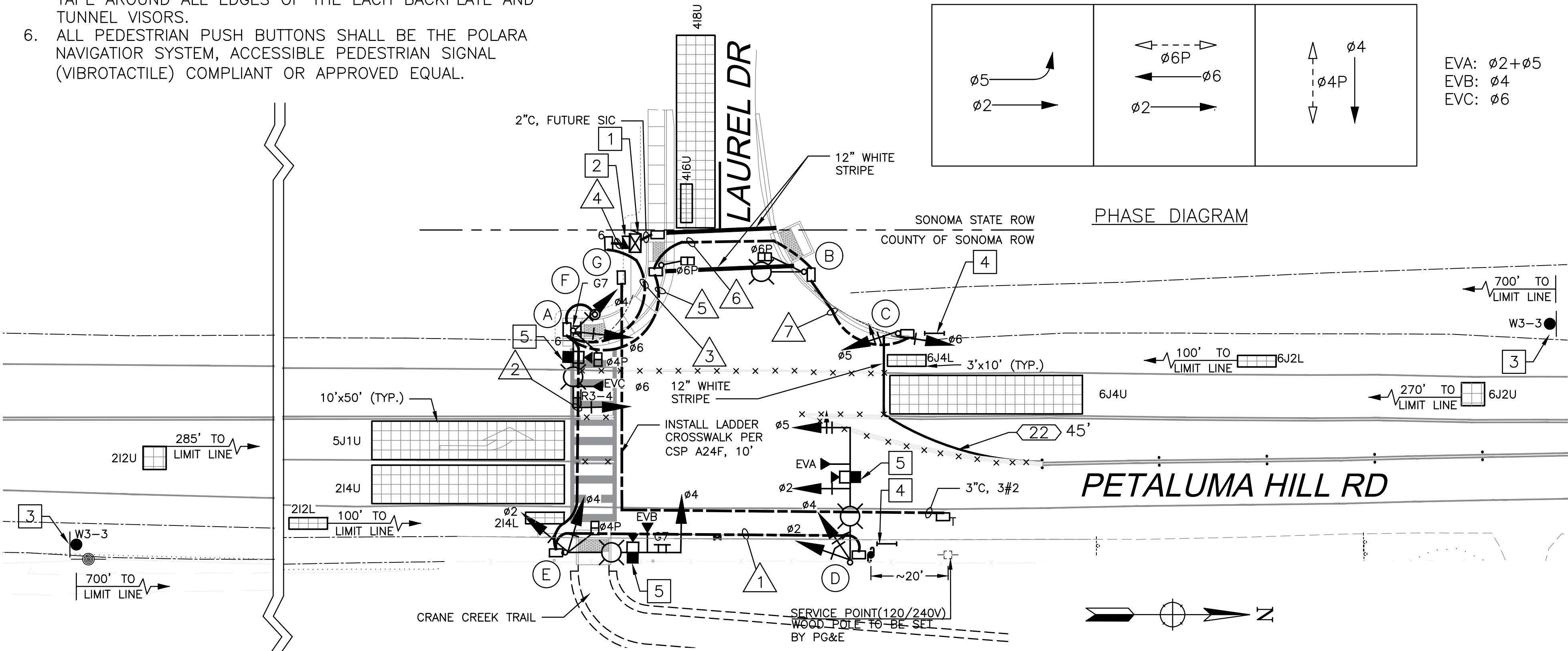
4. ALL NEW PULL BOXES SHALL BE NO. 5 UNLESS OTHERWISE NOTED.

5. ALL NEW SIGNAL HEADS SHALL HAVE 12" INDICATIONS, WITH BACKPLATES WITH 2" WIDE YELLOW RETROREFLECTIVE TAPE AROUND ALL EDGES OF THE EACH BACKPLATE AND TUNNEL VISORS.

6. ALL PEDESTRIAN PUSH BUTTONS SHALL BE THE POLARA NAVIGATOR SYSTEM, ACCESSIBLE PEDESTRIAN SIGNAL (VIBROTACTILE) COMPLIANT OR APPROVED EQUAL.
7. THE CONTRACTOR SHALL LOCATE ALL EXISTING UTILITIES PRIOR TO EXCAVATION OF STANDARD FOUNDATION AND CONDUIT PLACEMENT.

8. MAST ARM MOUNTED STREET NAME SIGNS SHALL CONFORM TO COUNTY DRAWING 706. NO. 5 PULL BOX SHALL CONFORM TO 2018 CALTRANS STANDARD PLANS ES-8A. EXTENSIONS ARE NOT REQUIRED.

9. ALL NEW PULL BOXES SHALL BE LABELED "TRAFFIC SIGNAL" OR "SERVICE." CALTRANS SHALL NOT BE INCLUDED IN THE LABEL.



EVA: Ø2+Ø5
EVB: Ø4
EVC: Ø6

CONDUCTOR TABLE

AWG	CIRCUIT	RUNS							
		1	2	3	4	5	6	7	
NO. 14	Ø2	3	3	3	3				
	Ø4	3	3	3	3				
	Ø5	3	3	3	6	3	3	3	
	Ø6			3	6	3	3	3	
	Ø4P		2	2	2				
	Ø6P			2	2	2	2		
	PBA(Ø4P)		2	2	2				
	PBA(Ø6P)			2	2	2	2		
	PEU			3					
	SPARES	3	3	3	6	3	3	3	
NO. 8	TOTAL No. 14	12	16	26	32	13	13	9	
	SIGNAL NEUTRAL	1	1	1	2	1	1	1	
	LIGHTING	2	2	2		2	2		
EVU CABLE	TOTAL No. 8	3	3	3	2	3	3	1	
	CHANNEL A	1	1	1	1				
	CHANNEL B		1	1	1				
	CHANNEL C			1	1				
	TOTAL EV CABLES	1	2	3	3	0	0	1	
CABLE	VIDS VIDEO CAMERA	1	2	2	2			1	
CONDUIT SIZE (INCHES)		2	3	3	2-3	2	2	2	
CONDUIT FILL (PERCENT)		16	10	14	8	15	12	12	

CONSTRUCTION NOTES

1. MODEL 2070E CONTROLLER ASSEMBLY WITH MCCAIN 2033 SOFTWARE, EDI 2010ECL CONFLICT MONITOR AND ITERIS VANTAGE VECTOR HYBRID EQUIPMENT IN MODEL 332L CABINET TO BE PROVIDED BY THE CONTRACTOR. FURNISH AND INSTALL CLARY BBU ON BACK OF CABINET PER SONOMA COUNTY REQUIREMENTS. CONTROLLER AND CABINET MUST BE DELIVERED TO DCE, 605 W. SIERRA AVE, COTATI TEN (10) WORKING DAYS PRIOR TO CONTRACTORS SCHEDULED INSTALL DATE IN ORDER TO TEST CABINET AND CONTROLLER. CONTACT COUNTY TO SCHEDULE. INSTALL PAD PER ES-3C. EXTEND PAD 10' TO THE EAST TO SERVICE ENCLOSURE.

2. FURNISH AND INSTALL TYPE III-AF SERVICE ENCLOSURE, PER CALTRANS STANDARD PLANS ES-2D. INCLUDE ITEMS 1-8, 15-17, 20, 22, 23 AND 2-SPARE 30A-1P.

3. INSTALL NEW STEEL POLE AND SIGN PER COUNTY DRAWING NO. 712 AND 712A.

4. INSTALL TYPE 1 BARRICADE AND R49(CA) SIGN PER CSP ES-7Q.

5. INSTALL VANTAGE HYBRID DETECTION/SENSOR PER MANUFACTURER RECOMMENDATION.

UNDERGROUND SERVICE ALERT
DIAL TOLL FREE
1-800-227-2600
OR 811
AT LEAST TWO WORKING DAYS
BEFORE DIGGING

0 20' 40'
SCALE: 1"=20'

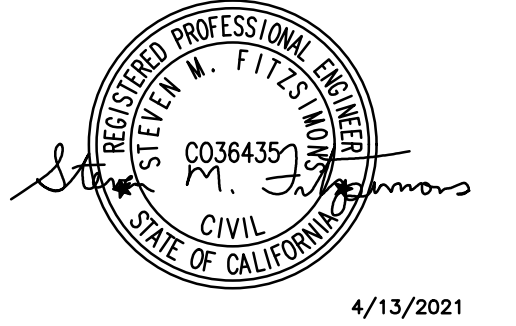
APPROVED FOR CONSTRUCTION

VANESSA MARIN GARRETT, R.C.E. 84141
CITY ENGINEER, CITY OF ROHNERT PARK
LICENSE EXPIRES SEPTEMBER 30, 2023

7/26/2023
DATE



W-Trans
490 Mendocino Avenue, Suite 201
Santa Rosa, CA 95401
(707) 542-9500



TRAIL TO CRANE
CREEK REGIONAL
PARK
PHASE 3

ROHNERT PARK, CALIFORNIA

REVISIONS

NO.	DATE	DESCRIPTION

ON A FULL-SCALE DRAWING, LENGTH OF BAR BELOW IS 1-INCH. IF BAR MEASURES LESS THAN 1-INCH, THIS SHEET WAS PLOTTED AT A REDUCED SCALE, WHICH MAY REQUIRE ADJUSTMENT OF SCALE(S) SHOWN ON DRAWING.

PROJECT	DATE
RPA075	SEPTEMBER 2022
DRAWN BY	CHECKED BY
ACJ	DJW

TRAFFIC SIGNAL AND
STRIPING PLAN

SHEET NO.

6 OF 6